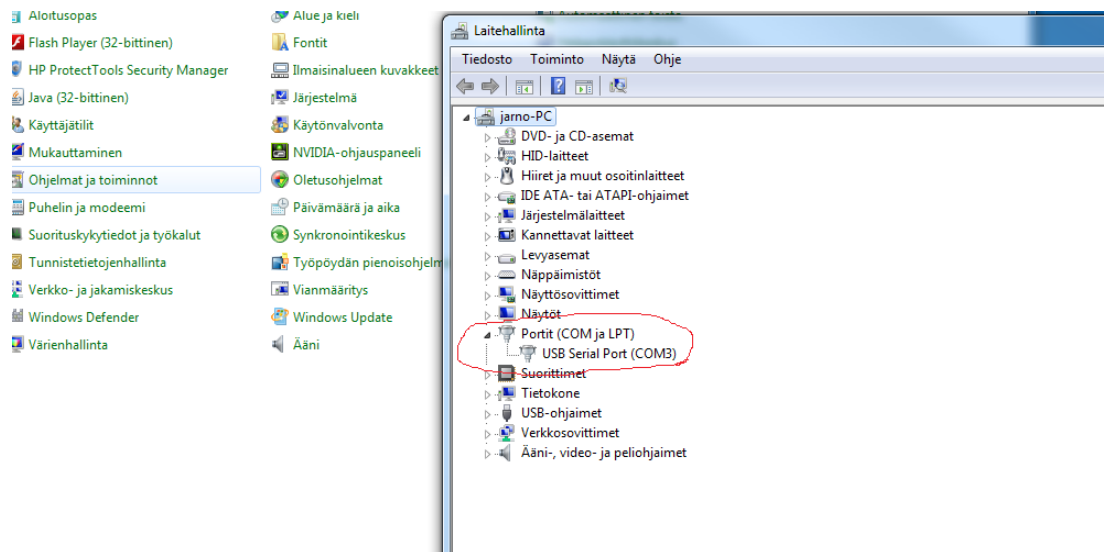


# Easy dig firmware upgrade troubleshooting

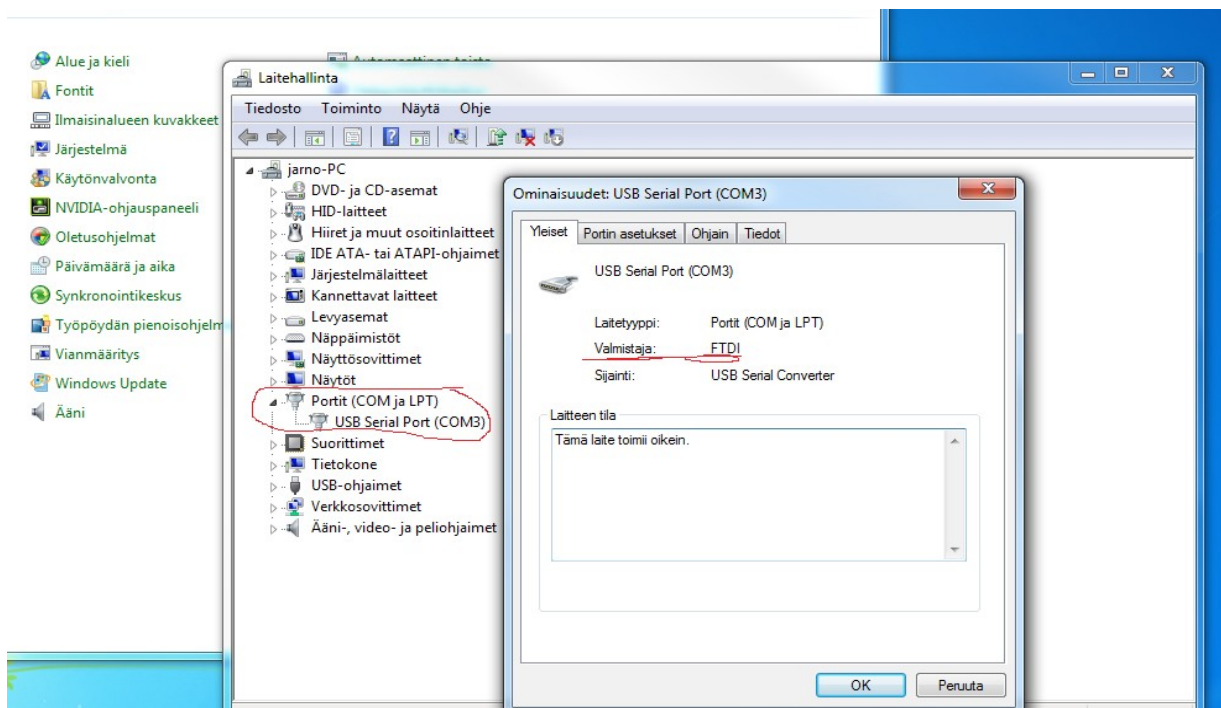
## Driver installation

You can also check <http://www.ftdichip.com/Support/Documents/InstallGuides.htm>

First lets make sure that usb-serialport driver (FTDI) is correctly installed. Go to **start** → **controlpanel** → **device manager** and try to find correct device. When driver is correctly installed it should device should appear as COM port USB serial port or similar.

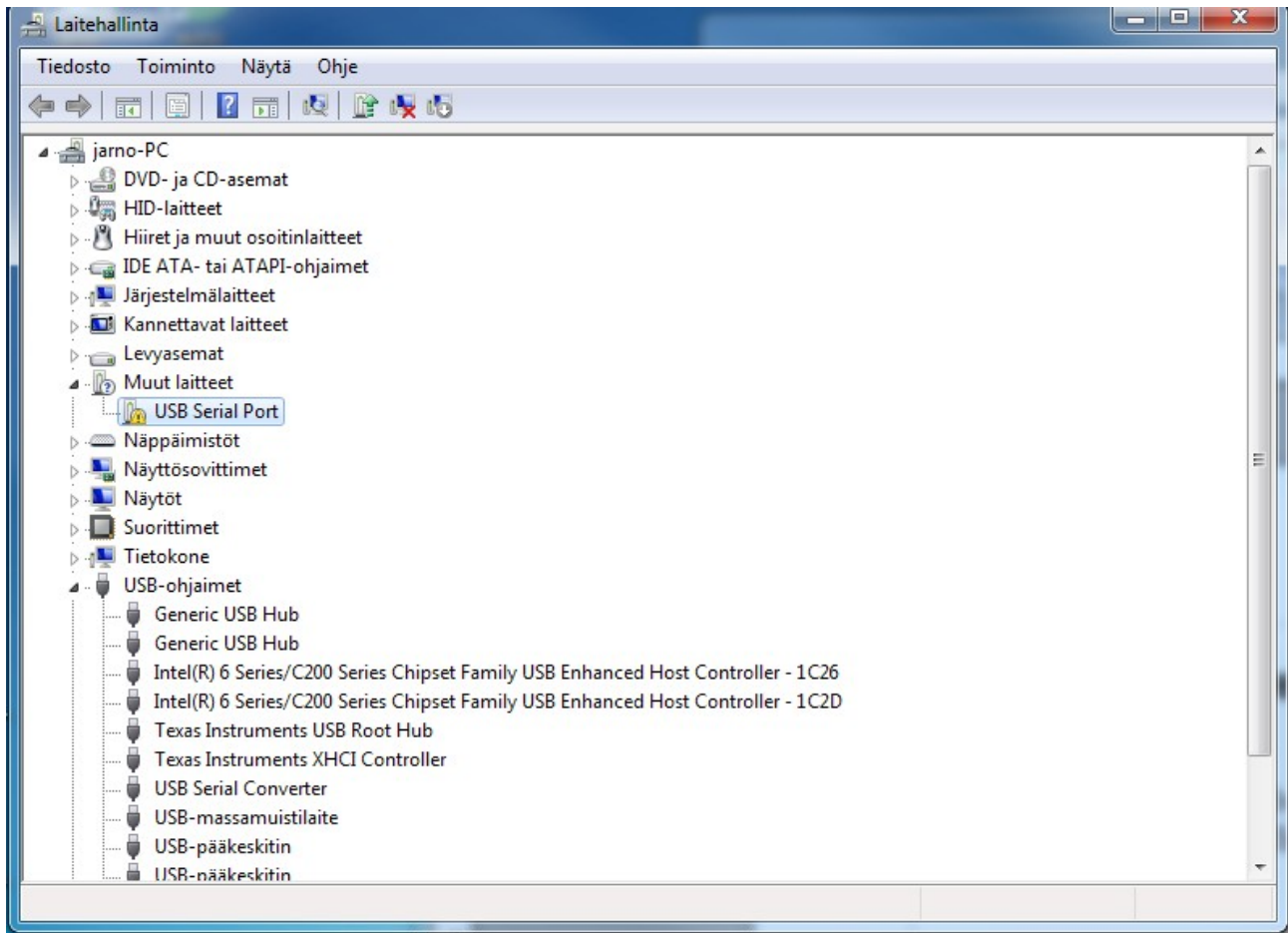


Picture 1: driver correctly installed in device manager



Picture 2: driver properties

If device driver is not correctly installed you might see something like picture 3 shows.



Picture 3: device not working properly. Driver not installed

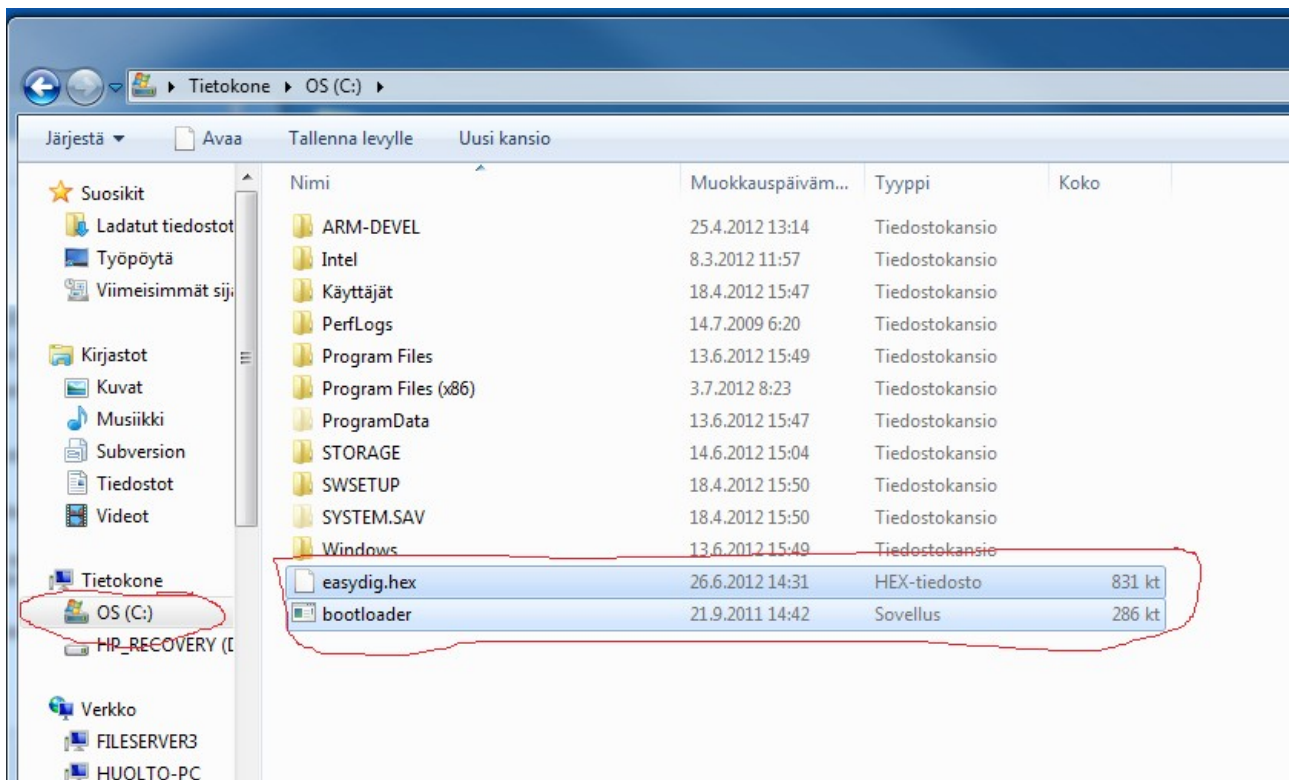
Try to install or remove+reinstall driver. (run CDM20824\_Setup.exe downloaded from <http://www.ftdichip.com/Drivers/D2XX.htm>)

Run easy dig firmware setup again.

### ***Test bootloader***

When you are sure that driver is correctly installed but firmware setup still is not working try following.

Copy files bootloader.exe and easydig.hex to [c:/](#) (or somewhere that is easy to access using command prompt) see picture 4



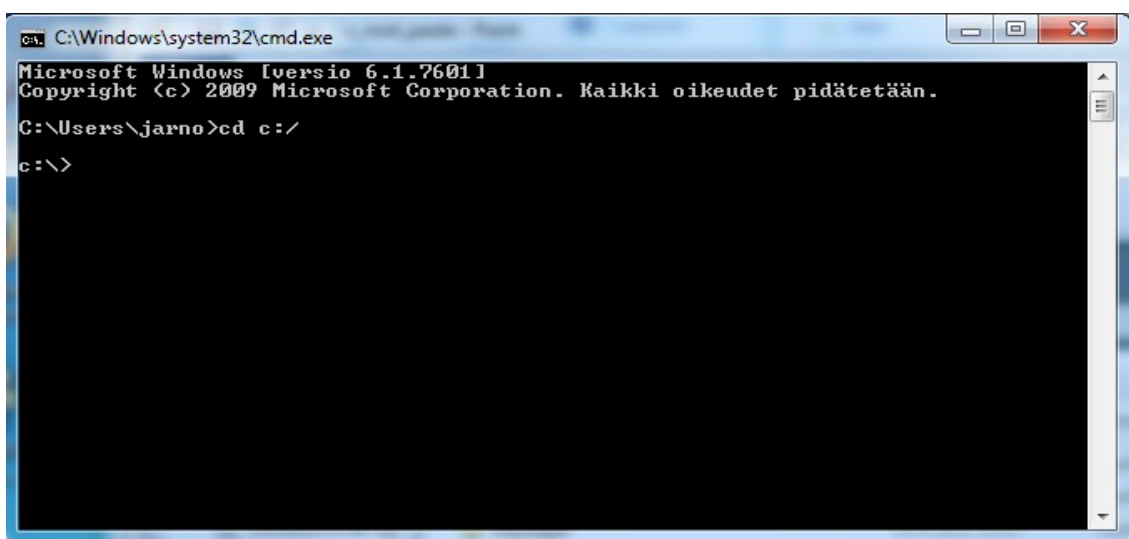
Picture 4: paste files to c:

when you have copied files to c: run windows command prompt.

Win 7 (Open the Command Prompt window by clicking the Start button , clicking All Programs, clicking Accessories, and then clicking Command Prompt. )

win xp (1 Click [Start](#). 2 Click Run. 3 Type **cmd** or **command** and press enter. )

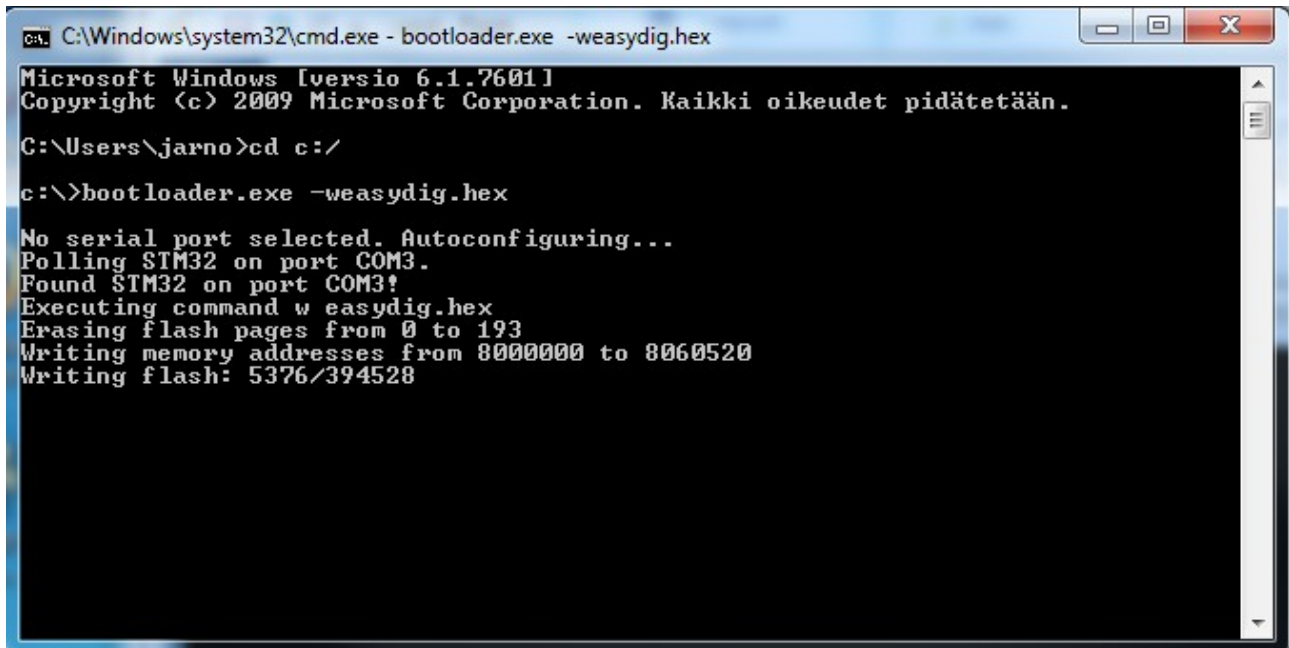
When you have entered to command prompt. Go to C: (or place where you have copied files)



Picture 5: type "cd [c:/](#)"

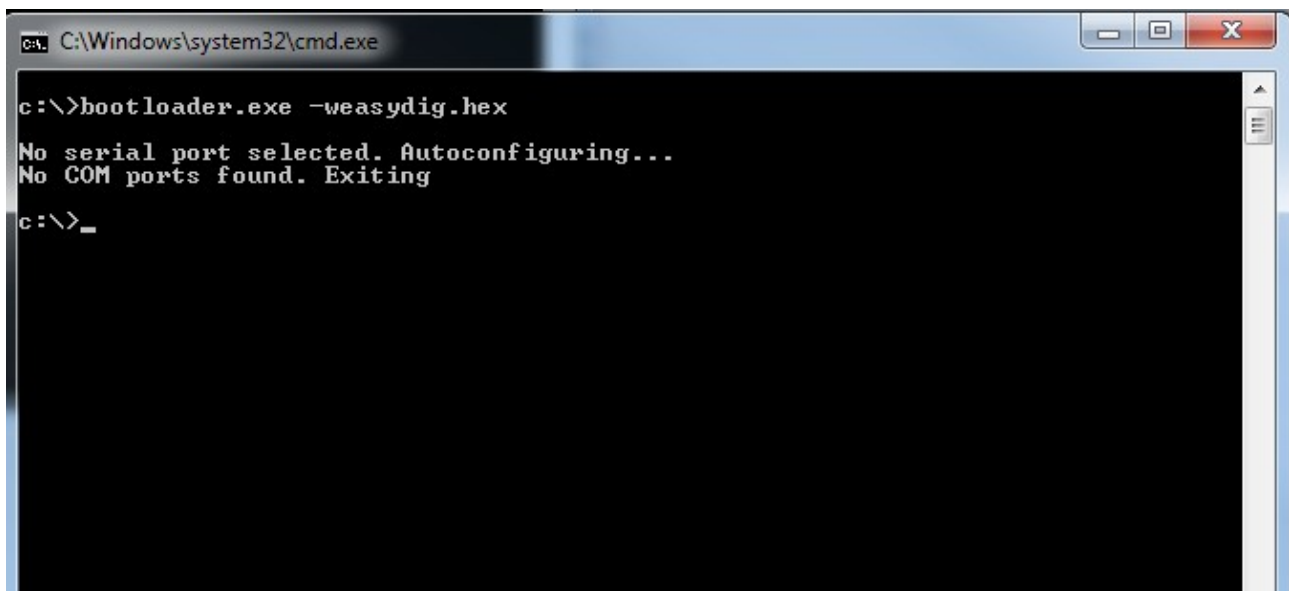
Now when we are in correct directory execute bootloader.exe **PRESS AND HOLD GEARWHEEL BUTTON WHILE YOU PRESS ENTER**

Type "bootloader.exe -weasydig.hex"



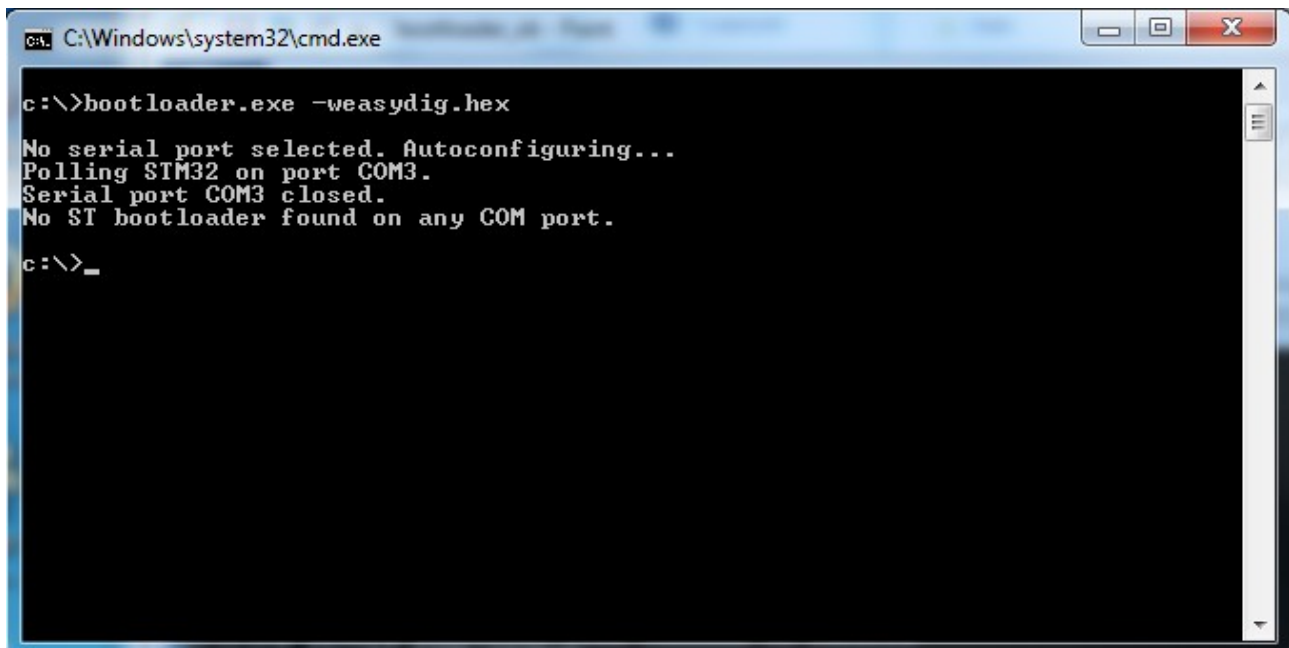
```
C:\Windows\system32\cmd.exe - bootloader.exe -weasydig.hex
Microsoft Windows [versio 6.1.7601]
Copyright (c) 2009 Microsoft Corporation. Kaikki oikeudet pidätetään.
C:\Users\jarno>cd c:/
c:\>bootloader.exe -weasydig.hex
No serial port selected. Autoconfiguring...
Polling STM32 on port COM3.
Found STM32 on port COM3!
Executing command w easydig.hex
Erasing flash pages from 0 to 193
Writing memory addresses from 80000000 to 8060520
Writing flash: 5376/394528
```

Picture 6: Everything ok. Wait until firmware is upgraded.



```
C:\Windows\system32\cmd.exe
c:\>bootloader.exe -weasydig.hex
No serial port selected. Autoconfiguring...
No COM ports found. Exiting
c:\>_
```

Picture 7: Driver is not installed or FTDI cable is not connected to pc



```
C:\Windows\system32\cmd.exe

c:\>bootloader.exe -weasydig.hex
No serial port selected. Autoconfiguring...
Polling STM32 on port COM3.
Serial port COM3 closed.
No ST bootloader found on any COM port.

c:\>_
```

Picture 8: Device broken or you did not press gearwheel

Result 6 everything is ok and you have now upgraded firmware using commandline tools

Result 7 install ftdi driver.

Result 8 a) you did not press and hold gearwheel button while executing command?

- b) ftdi cable is not connected to easy dig "PWR" socket make sure it is connected
- c) electric power socket is not connected to power supply (AC ~230v) make sure that easy dig is connected to power supply. (can you power easy dig on)
- d) easy dig is broken. **Send it to maintance.**